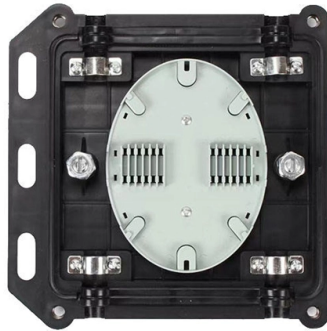


# Components for Low-Voltage Electrical Complete Sets of Equipment



## Overview

Our portfolio comprises power distribution boards, busbar trunking systems, distribution boards, protection, switching, measuring and monitoring devices, switches and socket outlets. From circuit breakers and buses to enclosures, panel boards, and switchboards, we offer a full range of safe, reliable solutions for low-voltage electrical distribution applications. We will be glad to provide you with extensive support from initial information, planning, configuration and. It includes segments: Battery Cell Production, Battery Pack Production, Recycling, Battery Applications, Active Materials and Components, Raw Material Mining and Refining ABB's Buildings and Infrastructure solutions focus on providing the essential systems that support transportation, energy. Within the category of Low Voltage Switches we can find, power contactors, motor protective circuit breakers, pilot buttons and overload relays, within these product ranges we can offer prestigious brands such as Siemens, Eaton or ABB. There are many categories of low voltage circuit breakers. Table 1: ANSI C84. 1: Electric Power Systems and Equipment - Voltage Ratings and IEEE 141: Recommended Practice for Electric Power Distribution for Industrial Plants divide system voltage into voltage classes. Courtesy: Page Southerland Page Inc. These include circuit breakers, contactors, isolators, dual power supplies, current transformers, inverters, soft starters, relays, buttons, indicator lights, and more.

## Article Content

### Reliable Low-Voltage Electrical Components

Low-voltage electrical components are essential devices used in circuits with voltages below 1200V (AC) or 1500V (DC). These include circuit breakers,

### What Are Low Voltage Systems? | VP Engineering

In this article, we share the fundamentals of low voltage systems, and help you better understand their importance, components, and applications.

### Basics in low voltage distribution equipment

This paper provides a basic overview of the definitions, components, applications and other details associated with low voltage distribution equipment. It covers electrical panelboards, switchboards

### Low-Voltage Components: Core Functions and Selection Guide

Are you struggling to choose the right low-voltage components for your system? Of course, it's a daunting task. You know, picking the wrong parts can lead to power failures, equipment

ptb\_AFSEC\_low\_voltage\_en\_lay4

Acknowledgements This AFSEC Technical guidelines for Low Voltage Electrical Installations was developed by the AFSEC Technical Committee 64 with the support of AFSEC Secretariat; PTB

### What Is Low Voltage – Definition, Safety, And Common

Low voltage refers to electrical systems operating at 50 to 1000 volts AC or 120 to 1500 volts DC. Common in residential, commercial, and control circuits, it

### Low-Voltage Switchgear: Essential Equipment for Modern Power Setups

Defining Low-Voltage Switchgear: Core Functions and Components Essential Components: Circuit Breakers and Distribution Panels Circuit breakers serve as the frontline

### Exploring basic components of a low-voltage electrical

When moving forward in specifying and sizing components, design teams must carefully consider basic components of the low-voltage system, main

### Basics in low voltage distribution equipment

Low voltage distribution equipment typically operates at less than 600 volts; in contrast, medium voltage equipment affords a wider range of 600 to 38,000 volts. This paper provides a basic overview of the

The complete portfolio for low-voltage power distribution

Whether in industrial applications or in the infrastructure – our comprehensive portfolio of products and systems offers safe, flexible and efficient possibilities of application for low-voltage power distribution

What is Considered Low Voltage? Complete Guide (2025)

Understand what is considered low voltage, its safety features, and applications across different technologies and industries.

Low Voltage Products | Low Voltage Products | ABB

ABB provides a full range of low voltage solutions to connect, protect, control and measure a wide range of electrical installations, enclosures,

Low-Voltage Switchgear: Essential Equipment for Modern Power Setups

Explore the essential components and functions of low-voltage switchgear and how they optimize energy distribution across various environments. Learn about circuit breakers, distribution

The Beginner's Guide to Low Voltage Wiring Basics

What is low voltage wiring? Low voltage wiring refers to the wiring used for low voltage systems, such as security systems, doorbells, thermostats, and audiovisual equipment. It typically operates at 12 to 24

Low voltage electrical distribution products | Schneider Electric

Discover our full range of safe and reliable solutions for low voltage electrical distribution products and systems, including circuit breakers, switches, and enclosures.

Low-Voltage Components: Core Functions and Selection Guide

To help you out, this guide focuses on individual low voltage components, breaking down their importance, proper selection, and fulfilling your needs. We will take you step by step through

ITER Electrical Design Handbook Codes & Standards

High-Voltage Test Techniques International Standard IEC 60060 defines a set of tests on equipment having its highest voltage for equipment  $V_m$  above 1kV, i.e. in the case of components and plant

Catalog Extract from LV 10 · 04/2020

This comprehensive portfolio for low-voltage power distribution and electrical installation technology covers every requirement – from the switchboard to the socket outlet.

What is high voltage and low voltage complete set

Want to fully understand what high and low voltage complete sets of equipment are and want to explore the differences between the two? This article will interpret them from multiple aspects

Low Voltage Products | Low Voltage Products | ABB

ABB's Low Voltage Products offering encompasses a wide range of electrical products designed to ensure the safe and efficient distribution and

Low-voltage industrial components

From our engineering department we will be happy to help you in the selection and specification of these products depending on their operating voltage, number of poles, etc. We have the highest turnover

Vacuum motors, replacement parts, accessories, and tools for all ...

Largest supplier of vacuums, motors, parts and accessories online. Free shipping on orders of \$75\* or more! Commercial equipment too!

What Is Electrical Switchgear? Types & How It Works

Learn what electrical switchgear means, including how it works, key components like circuit breakers and relays, and the types: LV, MV, HV, AIS,

## Contact Us

For more information, pricing, or custom solutions, please contact us:

Website: <https://aitaf.it>

Email: [info@aitaf.it](mailto:info@aitaf.it)

Phone: +39 331 847 2365

Address: Via Raffaello Sanzio 11, 20149 Milan, Italy

This document is for informational purposes only. Specifications subject to change without notice.

