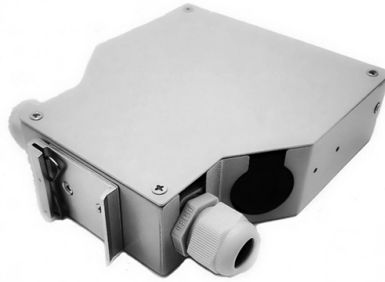


General Specifications of Incoming Line Distribution Box



Overview

1) Generally, the incoming line of power distribution box adopts five wire system, i.e. three phase lines a, B and C (generally yellow, green and red), one zero line (light blue) and one ground line (yellow with green stripes). Isolator Base should withstand the breaking capacity of 80 kA. To extinguish the arc immediately in isolators, in each phase arc-chutes with minimum 12 strips type. These Distribution Cabinets are to be outdoor type and to be fabricated out of 2 mm GI sheet steel. The body of the boxes shall have sufficient reinforcement with suitable size of channels keeping a provision for fixing and conforming to general. Our mission is to meet customer's expectations by providing satisfaction through cost, quality, service, delivery and continuous improvement. ABB Mini Center Compact distribution board is the basis for development and growth in meeting all the demands for a successful future in residential. Check electrical parameters: First understand the basic electrical parameters of Distribution box so that you can have a general understanding of the capacity and performance of the distribution box. It is an indispensable electrical equipment. Each of these wires has a specific, non-negotiable purpose: The Phase Lines : You've got three of these bad boys - A, B, and C phases. By convention, we use yellow for A phase, green for B.

Article Content

TECHNICAL SPECIFICATION FOR

All incoming connections, bus bars and feeder connections up to the particular MCCB shall be capable of the short time current rating specified, but connections beyond the MCCB need only be matched

Low voltage cable is selected for the incoming and outgoing lines of ...

When the leakage current is the rated leakage current, the breaking time of the leakage protector shall not be greater than 0.2S. The incoming and outgoing lines of the distribution box shall be low-voltage

6(& 7,21 9,, 7(& +1,& \$/ 63(& ,),& \$7,216

7HQGHUHU¶V 6WDPS,QLWLDOV 3DJH RI 7(& +1,& \$/63(& ,),& \$7,21 ±(/(& 75,& \$/:25.6 & 217(176 \$ 6& 23(2) :25. % 67\$1"\$5"6 & *(1(5\$/ " "(7\$/(" 7(& +1,& \$/ 63(& ,),& \$7,21 +7 3\$1 ...

How to determine the size, installation method and

(1) Wiring method of distribution box 1) Generally, the incoming line of power distribution box adopts five wire system, that is, a, B and C three-way phase line

Microsoft Word

The LT Distribution box for ABC single phase is used for Connection through overhead conductors or ABC line and for giving connections to the consumers. This specification covers the design,

Size determination, installation method and wiring mode

1) Generally, the incoming line of power distribution box adopts five wire system, i.e. three phase lines a, B and C (generally yellow, green and red), one zero line

Distribution Box and Selection Guide

Dividing incoming electrical power from the main supply into subsidiary circuits is the principal purpose of a distribution box. It contains a

Basic Composition Of Distribution Box System Diagram

The Distribution box system diagram mainly includes the following parts: Electrical parameter description: Equivalent to the electrical nameplate, it

Wiring requirements of distribution box

Wiring requirements of distribution box Upper incoming line, lower outgoing line, main circuit on the left, control circuit on the right, horizontal and vertical. The exposed laying can take the sheath line, or

TECHNICAL SPECIFICATION FOR LT DISTRIBUTION BOX

General Technical Particulars for LT Distribution Boxes : - The L.T. Distribution Boxes should be of the dimensions as per the drawing & details in the table furnished.

Distribution Boxes: Types and Functions

A distribution boxes acts as the load center and main distributor of electrical power within a building. Also called a distribution board, panel board,

How To Read The Distribution Box System Diagram

Analyze the incoming line part: Determine the incoming line source of the distribution box and the configuration of the incoming line circuit breaker, and

DRAFT SPECIFICATION FOR L. T. DISTRIBUTION BOX OF

The tenderer shall submit detailed constructional and dimensional drawing of complete distribution box with details of Porcelain Fuse Units and Composite stud fuse units, incoming and out going circuit

Incoming Line Phase Identification of the Meter Box Bus of Low

A new and comprehensive field intelligent electronic device, Circuit Terminal Unit, is developed to solve the problem of lacking real-time monitoring and controlling of low voltage

Selection and installation considerations for the incoming line method ...

Just like you wouldn't want a weak or clogged artery in your body, you don't want subpar incoming lines feeding your distribution box. We'll walk through everything you need to consider,

Distribution Box – Astryd Power Pvt. Ltd.

This specification covers the design, manufacture, testing at works, and supply of Distribution Boxes made out of CRCA MS (cold-rolled close annealed mild steel). These distribution boxes are used for

Maharashtra State Electricity Distribution Company Limited

Specification covers the design, manufacture, testing at works and supply of Distribution Boxes made out of CRCA MS for controlling the L.T. feeders from the L.T. side of Distribution Transformers. The

The installation requirements for the distribution box

A distribution box is the heart of any electrical system. It takes the incoming power and safely distributes it to different circuits throughout your

Basics in low voltage distribution equipment

Low voltage distribution equipment typically operates at less than 600 volts; in contrast, medium voltage equipment affords a wider range of 600 to 38,000 volts. This paper provides a basic overview of the

The installation requirements for the distribution box

Learn how to install a distribution box safely and correctly. Covers wiring, placement, standards, and expert tips for a compliant setup. A distribution

L.T. Distribution Box Specification

Key details include: 1) The boxes will be outdoor type made of glass fiber reinforced polyester composite material and include incoming porcelain fuse units and

Distribution Boards & Consumer Units

Mini Center Compact is a reliable range of distribution boards allowing maximum flexibility, offering wide choice of incomers: Switch Disconnecter, MCCB, MCB, RCCB, RCD or Direct Cable Connection.

GOVERNMENT OF INDIA

In the above context, the General Specification for Electrical Works (Internal) aims to lay down General guidelines to ensure safe, efficient, reliable, economical use of electricity.

Contact Us

For more information, pricing, or custom solutions, please contact us:

Website: <https://aitaf.it>

Email: info@aitaf.it

Phone: +39 331 847 2365

Address: Via Raffaello Sanzio 11, 20149 Milan, Italy

This document is for informational purposes only. Specifications subject to change without notice.

