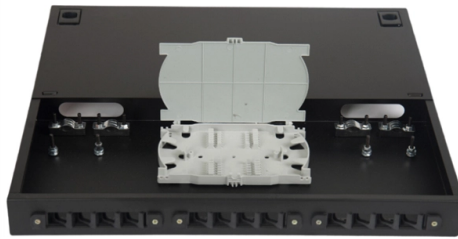


Standard thickness of indoor distribution boxes



Overview

Therefore, the thickness of the sheet metal of the cabinet body of the power electrical distribution box is usually not less than 1.0mm or thicker, may be. ABB Mini Center Compact distribution board is the basis for development and growth in meeting all the demands for a successful future in residential, commercial, and infrastructure segments. BAHRA Load Centers are powered by the best selection of international proven quality of breakers by BAHRA to provide reliable circuit protection against. The Indoor Distribution boxes family serve as a connection and branching solution for indoor use accommodating different types of LSA-PLUS® modules. Various capacities, materials, locking and mounting options are available. A wide range of the applicable LSA-PLUS® accessories can be used as well as. NO.

Article Content

Understanding Distribution Boxes: A Comprehensive Guide

Learn what a distribution box is, its types, and how to choose the right one for your project. Includes clear examples and expert tips.

Indoor Distribution Box (30P, 60P, 100P)

They are used for Indoor wire termination in buildings. The TS-DB indoor Distribution Points can be installed in two ways: direct wall installation and wall embedded installation.

Data Sheet: Indoor Distribution Boxes Family

The boxes come in various dimensions and are designed for wall mounting in dry, indoor areas. The boxes can be outfitted with overvoltage protection up to a maximum height of 33mm above the

TECHNICAL SPECIFICATION FOR LT DISTRIBUTION BOX

General Technical Particulars for LT Distribution Boxes : - The L.T. Distribution Boxes should be of the dimensions as per the drawing & details in the table furnished. approved clearances and technical

What Is an Electrical Distribution Box? A Complete Guide

An electrical distribution box routes power, prevents overloads, and keeps wiring organised—essential for safe, efficient home and

Outdoor Electrical Distribution Box Specifications: NEC

Complete specification guide for outdoor electrical distribution boxes covering NEC Article 312 requirements, NEMA ratings, sizing calculations, and

How to choose a distribution box of the right size for a project based ...

If you're like most electrical professionals, picking the right distribution box for your project can feel like navigating a maze. I've been in those shoes - staring at spec sheets, worrying about

How to Choose the Right Distribution Box?

Find out how to choose the right distribution box for your needs! Learn about sizing, safety standards, essential features, and all factors.

NEC Reference Metallic Boxes

NEC® Reference Article 314 of the National Electrical Code® covers the installation and use of boxes. The article includes table references that guide the electrician in the selection of the proper box size

Specific design requirements for distribution box.

The various indexes of the boards of distribution boxes or distribution cabinets must meet the relevant requirements of the state. All distribution boxes or distribution cabinets shall be made of cold-rolled

What are the criteria for selecting the thickness of the sheet metal ...

- In an indoor environment that is dry and has less dust, the thickness of the sheet metal of the electrical distribution box cabinet can be selected according to the general standard.

Distribution Boards & Consumer Units

Distribution boards, together with modular ABB system pro M Compact protection devices and Modular Din Rail Components, can be used for many applications in electrical building installation. Solutions

How to Choose a House Distribution Box | CHINT global

A well-chosen distribution box ensures the safety and efficiency of your household electrical system. This article guides you through selecting a

Australian Distribution Boxes: Key Features and How E

Learn about the unique features of distribution boxes in Australia and how E-abel meets local standards with SAA certification, advanced

National Standard Thickness Of Distribution Box Box Body

According to national standards, the wall thickness of the low-voltage distribution box should not be less than 1.5mm, and the metal auxiliary pole should be 1.2mm.

DP and DCB in FTTH Network : Precious Information

DP boxes shall be used to house terminal modules for cross-connections of secondary distribution cables and subscriber's indoor

Transformer and Distribution Cabinet Equipment

2.1 Pre-installation Requirements for Complete Distribution Cabinets, Control Cabinets, and Distribution Boxes: - The indoor ceiling and wall decoration

12 types of distribution boxes and how to choose them

How to Choose the Right Distribution Box: Your Step-by-Step Guide So, you've seen the options—now what? Choosing the best distribution box isn't rocket science, but it does need a bit of thought. I'll

Complete Guide For Distribution Boxes Types

Distribution boxes, also known as electrical distribution boards or panels, are pivotal components in electrical systems, ensuring the safe and organized distribution of

DISTRIBUTION BOARDS CATALOG

Designed by BAHRA, the Load Centers (LC) use the best selection of materials, cutting edge technology and class leading features to ensure safety, durability and performance. The remarkable Load Center

Electrical Enclosure Sizes: Comprehensive Guide to

Find the right electrical enclosure size for any project. This guide covers standard sizes, selection tips, ratings, and sizing charts.

Distribution Box Guide: Types, Components & Solutions

Understand distribution boxes (DB boxes) in 5 minutes. Learn about types, components, functions, and uses. Find the perfect DB box for your needs.

Area distribution boxes with connectors

5. Installation The area distribution box associated with the copper or optical feedthrough sockets allows total flexibility: the connections close to the workstation are centralised. The copper or optical fibre

Himel Metal Enclosure Distribution Box Brochure Sep 2023

Reliable, affordable accessible Metal Clad Distribution Box Product features • Easy installation design with cable entry from top, bottom & back • Standard sizes available from 1 row 10 ways to 5 rows 90

Contact Us

For more information, pricing, or custom solutions, please contact us:

Website: <https://aitaf.it>

Email: info@aitaf.it

Phone: +39 331 847 2365

Address: Via Raffaello Sanzio 11, 20149 Milan, Italy

This document is for informational purposes only. Specifications subject to change without notice.

